

Welcome to the East Columbia Environmental Impact Statement Public Hearing April 30, 2009

Welcome! Thank you for attending this open-house public hearing. Your participation tonight and at future public events is vital to improving transportation in East Columbia.

The purpose of tonight's open-house public hearing is to seek your review and comment on the Draft Environmental Impact Statement that recommends how to improve transportation in the area between I-70 south to New Haven Road, and U.S. Highway 63 east to State Highway Z.

Study team members are available at each of the stations around the room to provide information, answer questions and listen to your comments. Please take the time to visit all of the stations and provide your comments in writing or orally at Station #6. Written comments, post marked by May 18, 2009, will be accepted by email or regular mail at the addresses listed below.

Below is a brief list of what you will find at each station:

- Station #1: Welcome, Sign In and Introduction
- Station #2: Purpose and Need
- Station #3: Alternatives
- Station #4: Preferred Alternative
- Station #5: Draft Environmental Impact Statement
- Station #6: Comments

An open-house public hearing is part of the review and comment period that opened on April 3, 2009 and closes on May 18, 2009. Public hearing materials and the ability to comment are also available online through May 18, 2009 at www.EastColumbiaEIS.com.

Written comments, postmarked by May 18, 2009, will also be accepted via the following:

E-Mail: EastColumbiaEIS@ch2m.com

Mail: EC-EIS Study/CH2M HILL
1034 S. Brentwood Boulevard, Suite 2300
St. Louis, MO 63117

For more information:
www.EastColumbiaEIS.com
1-888-ASK-MODOT (275-6636)



East Columbia-EIS Frequently Asked Questions

Q. What is an Environmental Impact Statement (EIS)?

A. An EIS is a full disclosure document that details the process through which a transportation project was developed, includes consideration of a range of reasonable alternatives, analyzes the potential impacts on the natural and man-made environment resulting from the alternatives, and demonstrates agreement with other applicable environmental laws and executive orders. The EIS process is completed in the following ordered steps: Notice of Intent (NOI), Draft EIS, Final EIS and Record of Decision (ROD).

Q. Why is this EIS necessary?

A. The National Environmental Policy Act (NEPA) requires Federal agencies to prepare EISs for major Federal actions that could significantly affect the quality of the human environment.

Q. What is the purpose of this study?

A. The study was initiated to identify and evaluate options to improve transportation in the rapidly growing area between Interstate 70 south to New Haven Road, and U.S. Highway 63 East to State Highway Z. Working closely with the public, resource agencies and technical experts, state and local officials are evaluating alternatives that would most effectively address traffic congestion and safety concerns, connect the major highways between Eastern Boone County and Columbia and improve access to Eastern Columbia.

Q. How will my input be used in the process?

A. Study recommendations come from technical analysis combined with public insights and preferences. Solutions are developed that balance community needs with technical and regulatory constraints such as cost, feasibility and environmental impacts.

Q. What happens after today's meeting?

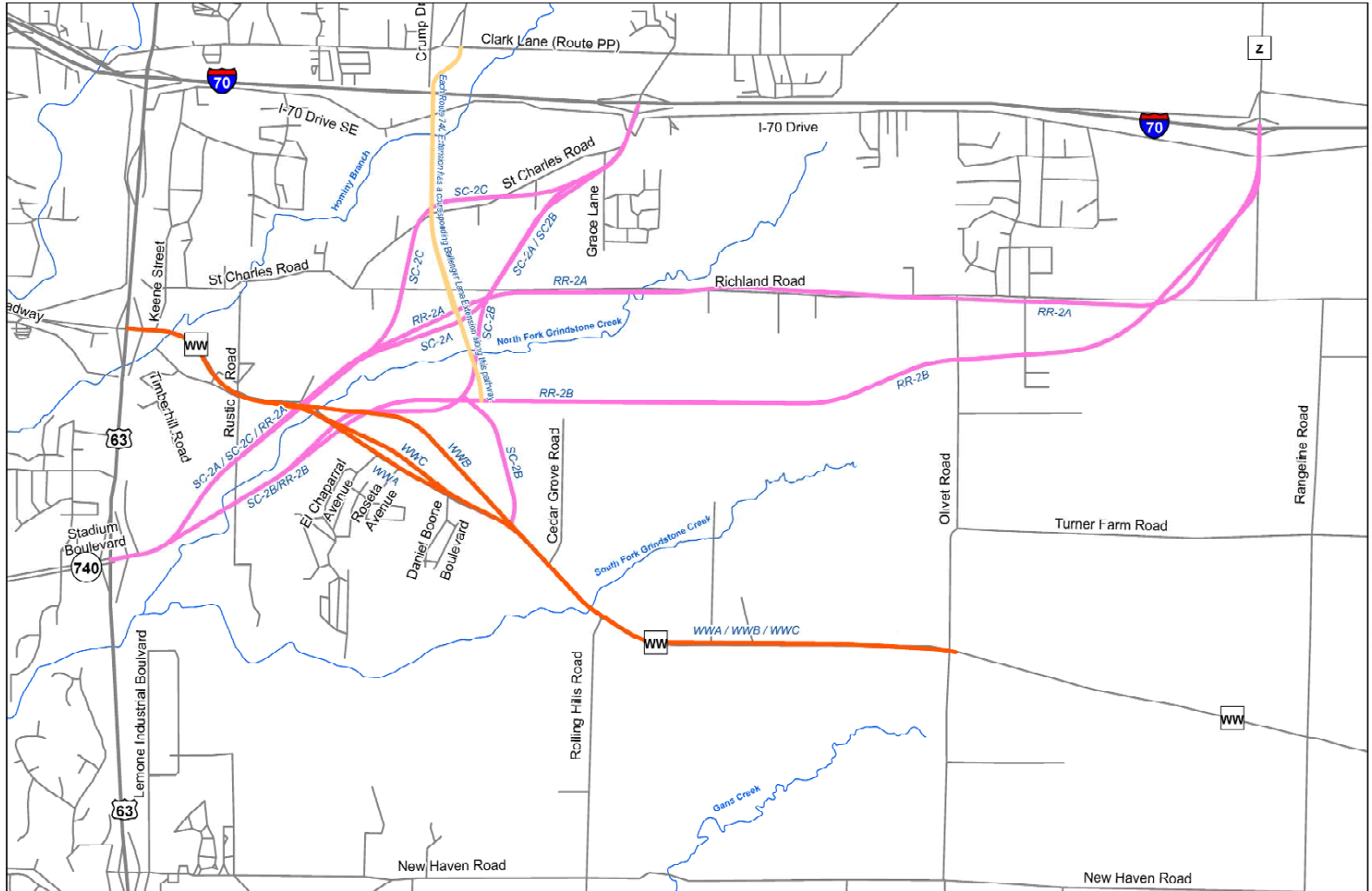
A. Following public review, revisions may be made to the preferred alternative and the Final EIS will be prepared and submitted to Federal Highway Administration (FHWA) for approval. The Final EIS will have a 30-day comment period and copies will be available for review on the project Web site and at other public locations. Following this comment period, the FHWA will issue a Record of Decision. After FHWA issues the Record of Decision, the Missouri Highways and Transportation Commission can approve the selected alternative and MoDOT, the City of Columbia and Boone County will be able to move forward with the project whenever funding becomes available.





East Columbia EIS

Reasonable Alternatives





East Columbia EIS Preferred Alternative (SC-2A)

